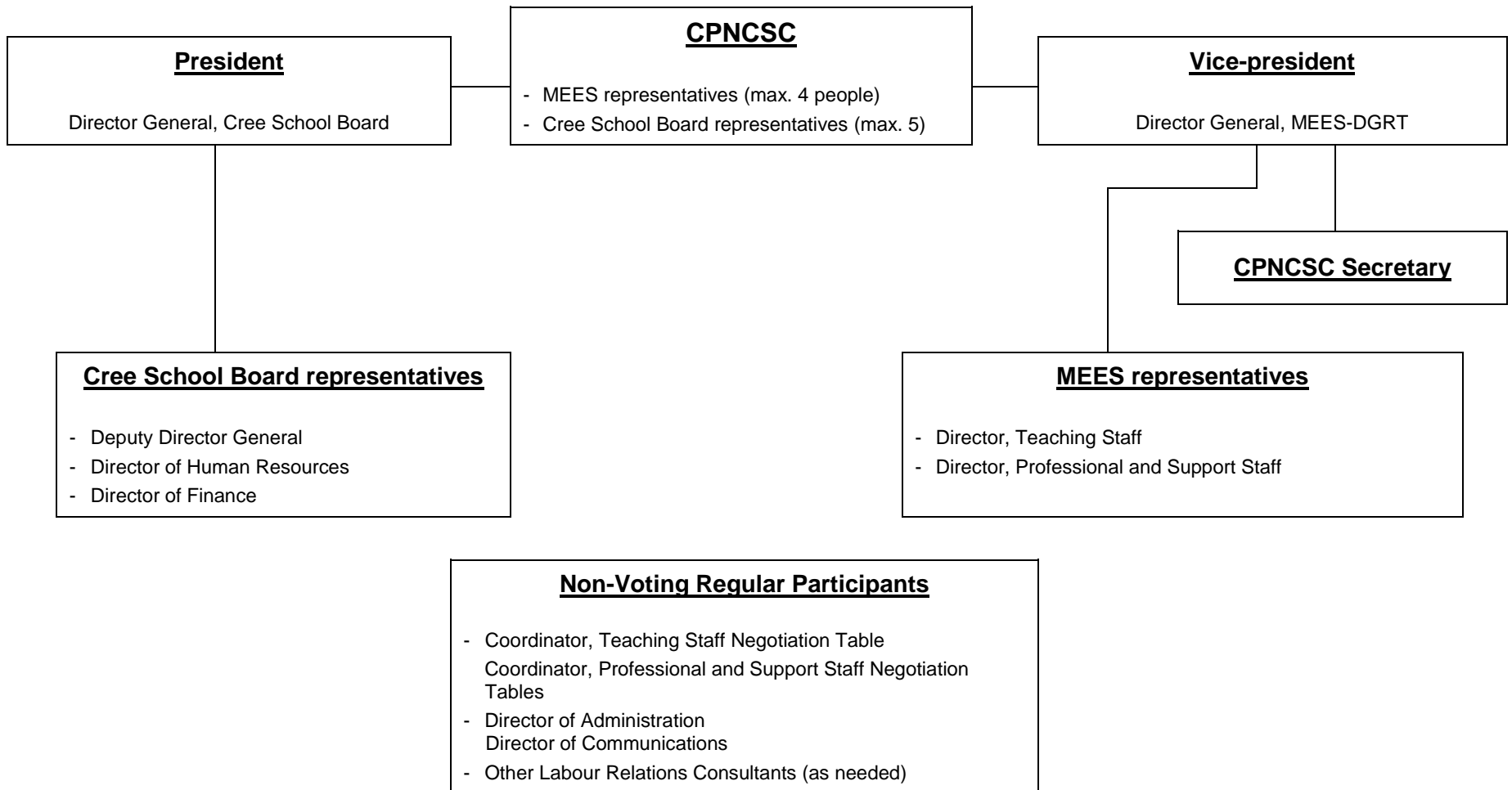




**Comité patronal de négociation pour la Commission scolaire Crie
Management Negotiating Committee for the Cree School Board**

ORGANIZATION CHART





**Comité patronal de négociation pour la Commission scolaire Crie
Management Negotiating Committee for the Cree School Board**

PRESIDENT

Abraham Jolly

VICE-PRESIDENT

Monique D'Amours

MANAGEMENT NEGOTIATING COMMITTEE MEMBERS

Cree School Board Representatives

Director of Human Resources

Director of Finance

Natalie Petawabano

Matthew Rabbitskin

MEES Representative

Direction générale des relations du travail

Pascal Poulin

Secretary of CPNCSC

Luisa D'Andrea

NON-VOTING PARTICIPANTS

Direction générale des relations du travail - MEES

Direction générale des relations du travail - MEES

André Guérard

Vacant

ADMINISTRATION

Director of Administration

Édith Bérubé

Accounting

Sandra Rodriguez

Carole Bélanger

(freelance)

Translation

Director of Communications

Secretary – Communications and Negotiations

(Teachers, professionals and support staff)

Jean-Pierre St-Gelais

Kimly Tum